

Why Should I Worry About My Horse's Teeth?



Talk to your veterinarian about establishing a regular dental care routine for your horse.

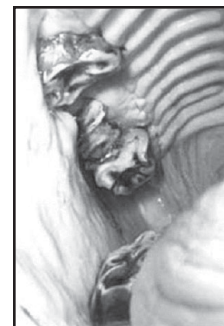
Proper dental care is essential to your horse's health, well-being, and longevity. Even if your horse does not show outward symptoms of dental problems, it's likely that he has developed sharp points on his teeth which can interfere with his ability to chew hay and grain easily.

As horses age, it is important to maintain an even bite plane in order to ensure a level grinding surface into their later years. Otherwise, the surfaces may be worn excessively and/or unevenly, and alignment may be impossible, possibly leading to gum disease in older horses.

Among many benefits, proper equine dental care can prevent premature tooth loss, reduce impaction and colic, allow easier tooth eruption, and prevent pain during bit use or feeding. Ask your veterinarian to recommend a dental care program that is appropriate for your horse.

Consult your veterinarian immediately if your horse exhibits any of these symptoms of advanced dental disease:

- Foul breath
- Weight loss
- Head tossing
- Dropping grain
- Biting problems: stiffness, resistance, refusal to take a lead
- Soaking food before eating
- Large pieces of undigested food in manure
- Facial swelling
- Feed packing
- Colic



Without regular dental care



With regular dental care



Oregon
Veterinary
Medical
Association

www.oregonvma.org

© 2005 Oregon Veterinary Medical Association

The Oregon Veterinary Medical Association is a nonprofit organization of veterinarians who are dedicated to helping people give their animals a high quality of life.